

HIS RECOMMENDED OPTIONAL TOUR

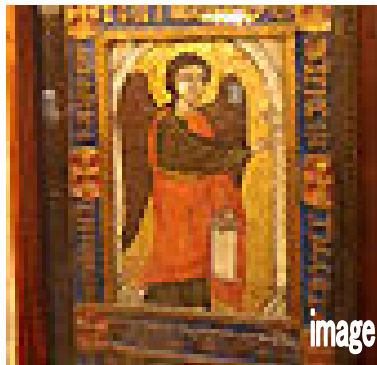
PRICE PER PERSON in RM

OPTIONAL	DURATION	ADULT	CHILD (6~11YRS)	CHILD (2~5YRS)	INFANT
Sound & Light at Giza Area (with Assistant)	3hrs	180	110	80	0
Dinner Cruise (with Assistant)	4.5hrs	200	120	85	0
S/S of Memhis, Saqqara & Dahsur (with Guide & Lunch)	6hrs	320	190	130	0
Overday Alexandria (with Guide & Lunch)	12.5hrs	380	240	150	0
Overday Luxor by Air (with Guide & Lunch)*	17.5hrs	1,800	1,400	1,200	400
S/S Old Cairo (with Guide & Lunch)	6hrs	240	140	100	0

■ The following fares are based on per person on twin-sharing basis. (minimum 2 person)

■ For details optional tours, please contact our staff for further assistance.

*ESA will transfer the guests from Hotel to Cairo Airport, but guests will fly to Luxor and back to Cairo on their own.
English Speaking Guide will pick up and send off guests at Luxor Airport.



Terms & Conditions

- The above Package Tour is valid until 21MAR2012.
- A non-refundable booking deposit fee of RM500 per person (Adult or child) is payable within 72 hours of confirmation by H.I.S TRAVEL (MALAYSIA)
- The balance payment is required to be paid by 30 days prior to departure date.
- In the event of amendment/ cancellations of bookings, the following amendment/ cancellation fees will be imposed based on the timing of the cancellation:

Amendment / cancellations till 31 days prior to departure date	: RM500 per person
Amendment / cancellation 30 days ~ 22 days prior to departure date	: 50% of tour payment
Amendment /cancellation 21 days onwards prior to departure date /no show	: 100% of tour payment (NIL REFUND)

CANCELLATION REQUESTS CAN ONLY BE PROCESSED ON OUR BUSINESS HOURS.

REQUESTS RECEIVED OUTSIDE BUSINESS HOURS WILL BE PROCESSED THE NEXT BUSINESS DAY.

THERE IS NO REFUND OF A DEPOSIT AFTER PAYMENT.

*TIPPING IS NOT COMPULSORY.

H.I.S.Travel (M) Sdn.Bhd. - Kuala Lumpur Branch

Business Hours Mon—Fri 10:00~18:30 Sat 10:00~14:00

Sun·Public Holidays Closed

ADD: Suite 1206, 12th Floor, Central Plaza, 34, Jalan Sultan Ismail, 50250, KL

For Enquiries, please contact : TEL (03)2148-8000 FAX(03)2141-9593

HP <http://www.his.com.my/> email : enquiry@his.com.my

